



WEDDINGS AND  
CELEBRATIONS







An exclusive and memorable place  
to celebrate in a stunning and  
prestigious medieval setting





*The Merchant Adventurers' Hall is a wonderfully romantic setting suited for large or small wedding celebrations.*

Larger ceremonies take place in our stunning timbered Great Hall, whilst small ceremonies (20 people or less) are held in the elegant Governor's Parlour. Afterwards, celebrate with a dinner in the Great Hall followed by an evening reception in the Undercroft where entertainment and bar facilities are positioned.



### The Walled Garden

The Hall's secluded walled garden provides an ideal setting in the Spring and Summer months for a pre-dinner drinks reception and plenty of potential for photographs to capture celebrations.

### Planning your day

Our friendly staff are on hand to offer advice and assistance on the run up to your big day. Weddings can be booked on Saturdays from 1.00pm providing ample time to celebrate your special day.

# Hire Charges

## Hall Hire Charge

	2026	2027	2028
--	------	------	------

Weddings: Saturdays - exclusive hire from  
1.00pm.

£4,995	£4,995	TBC
--------	--------	-----

Dinners - Friday and Saturday, from 7.00pm

£1,350	£1,350	TBC
--------	--------	-----

Dinners - Sunday to Thursday, from 7.00pm

£1,200	£1,200	TBC
--------	--------	-----

---

## Extras

Use of the hall PA system (background music/ speeches)	£95
--	-----

Open fire in reception area	£65
-----------------------------	-----

## Payments & Cancellations

Provisional Bookings will only be held for 7 days without payment.

A non-refundable deposit of half the basic hire charge is required on booking and full payment is required 3 months before your event. Payment can be made via BACS, credit or debit card.

Once the balance has been paid, if the event is cancelled, a refund cannot be made.

*The hire of the Hall is not subject to VAT.*

*The charges on the use of the PA system and open fire are inclusive of VAT.*



# Catering



## BRADSHAW'S

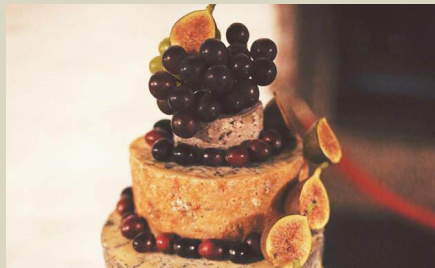
Bradshaws of York have been established as a leading outside and event caterer in York and North Yorkshire for over 30 years.

Unit 3, London Ebor Business Park  
Millfield Lane, Nether Poppleton  
York, YO26 6PB

**01904 780775**

[judi@bradshawsofyork.com](mailto:judi@bradshawsofyork.com)

[www.bradshaws-caterers-york.co.uk](http://www.bradshaws-caterers-york.co.uk)



## CROFT KITCHEN

Croft kitchen combines the very best in personal service with the tastiest food & drink sourced from local suppliers in North Yorkshire.

Green Park Business Centre  
Goose Lane, Sutton-on-the-Forest  
York, YO61 1ET

**01347 811194**

[caroline@croftkitchen.co.uk](mailto:caroline@croftkitchen.co.uk)

[www.croftkitchen.co.uk](http://www.croftkitchen.co.uk)



## FIZZ & FIRE

Fizz and Fire bring a touch of gourmet glamour to your corporate event. Their barbecues are world-class, and a great way to feed large numbers of people in a fun way.

Office 413, Birch Park Thorp Arch  
Trading Estate, Wetherby, LS23 7FG

**01937 849911**

[info@fizzandfire.co.uk](mailto:info@fizzandfire.co.uk)

[www.fizzandfire.co.uk](http://www.fizzandfire.co.uk)



# Catering



## HOMEGROWN HOSPITALITY

Homegrown Hospitality is a family-run business with Yorkshire farming at its heart; using the best locally sourced and homegrown ingredients.

Unit 708, Street 3, Thorp Arch Estate,  
Wetherby, LS23 7FF

**01937 206011 / 07759 736273**

[team@homegrownhospitality.co.uk](mailto:team@homegrownhospitality.co.uk)  
[www.homegrownhospitality.co.uk](http://www.homegrownhospitality.co.uk)



## PURPLE CHILLI

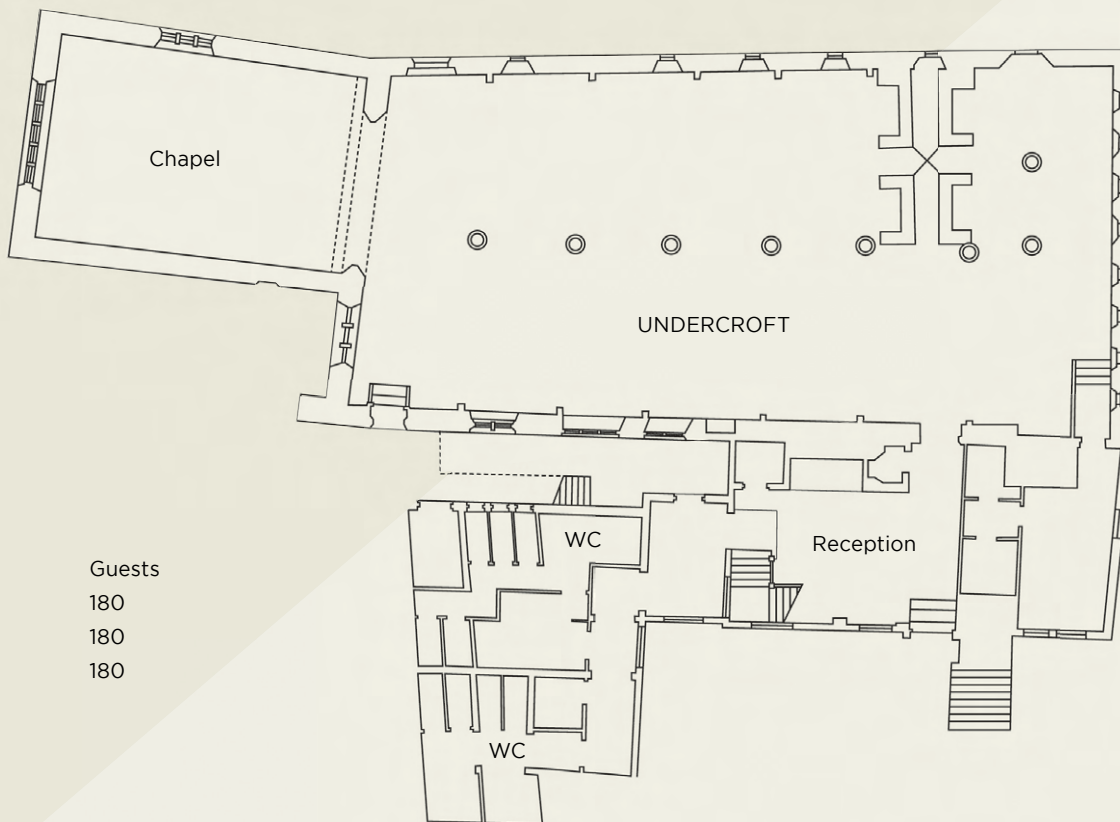
Purple Chilli provide the tastiest, best looking food around using locally sourced and freshly prepared ingredients.

Unit 3, Seafire Close  
Clifton Moor  
York, YO30 4UU

**01904 403060**

[info@purplechillieventscatering.co.uk](mailto:info@purplechillieventscatering.co.uk)  
[www.purplechillieventscatering.co.uk](http://www.purplechillieventscatering.co.uk)

# Ground Floor



## UNDERCROFT

Suitable for	Guests
Drinks Reception	180
Evening Wedding	180
Reception	180

# First Floor

## GREAT HALL

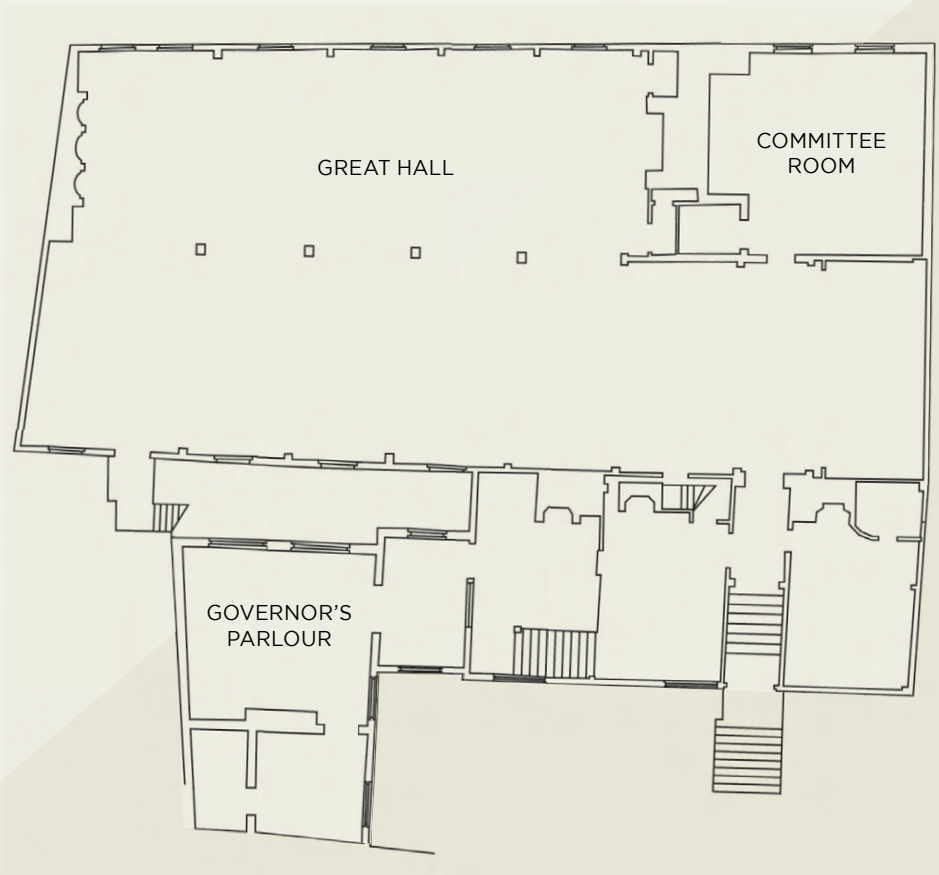
Suitable for	Guests
Dinner	180
Theatre Style	180
Cabaret Style	180
Drinks Reception	180
Civil Ceremony /	
Partnership	180

## GOVERNOR'S PARLOUR

Suitable for	Guests
Dinner	14
Civil Ceremony	20

## COMMITTEE ROOM

Suitable for	Guests
Dinner	20
Civil Ceremony	20





## Location map and travel information



*In the heart of the city and easily accessible.*

York is on the main rail line and is easily reached by road from all directions via the A1, A64, A1036 and A19.

The Hall is conveniently located in York city centre, a 20 minute walk from the train station, and 5-10 minute walk from several car parks. The Grimston Bar Park and Ride leaves you at our door.

The Hall is located between the streets named Piccadilly and Fossgate, and is fully accessible with level access from the Fossgate entrance. The main entrance on Piccadilly has steps down into the gardens.

The nearest car parks, as indicated on the map are:

- P1. Piccadilly (closes 6.30pm)
- P2. Peel Street
- P3. Castle
- P4. St. George's Field



Early booking is recommended as we are a popular venue.  
Please call us on 01904 654818 or email to discuss your  
requirements. Viewings of the Hall are by appointment only.





MERCHANT  
ADVENTURERS'  
HALL


## Booking

Early booking of the Hall is recommended as it is a popular venue. Please call or email us to discuss your requirements. Viewings of the Hall are by appointment only.

## Contact

Merchant Adventurers' Hall, Fossgate, York YO1 9XD  
01904 654818 [enquiries@merchantshall.york.org](mailto:enquiries@merchantshall.york.org)

## Find us on social media

 [Merchant-Adventurers-Hall](https://www.facebook.com/Merchant-Adventurers-Hall)

 [@merchantadventurershall](https://www.instagram.com/merchantadventurershall)

[www.merchantshall.york.org/hire](http://www.merchantshall.york.org/hire)

The Company is the sole Trustee of the Registered Charities numbered 235256 and 700792. VAT number 475 4666 09.